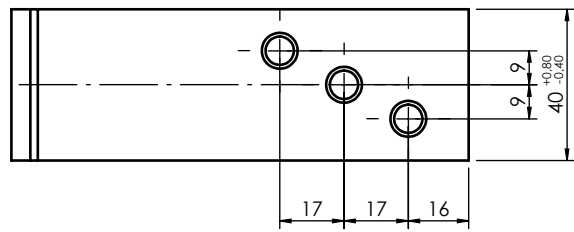
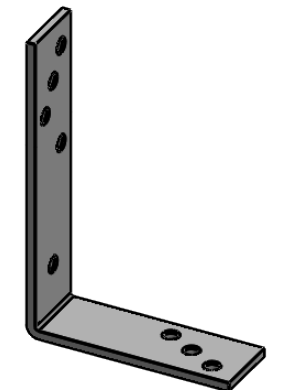
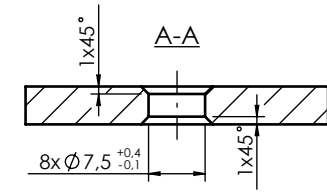
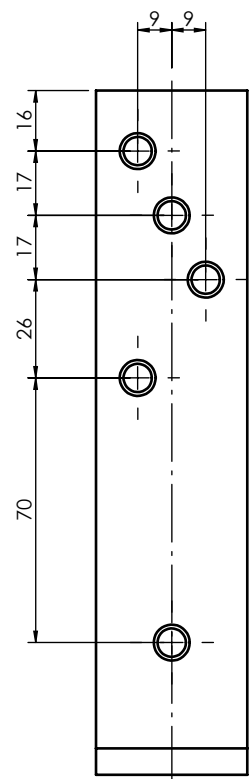
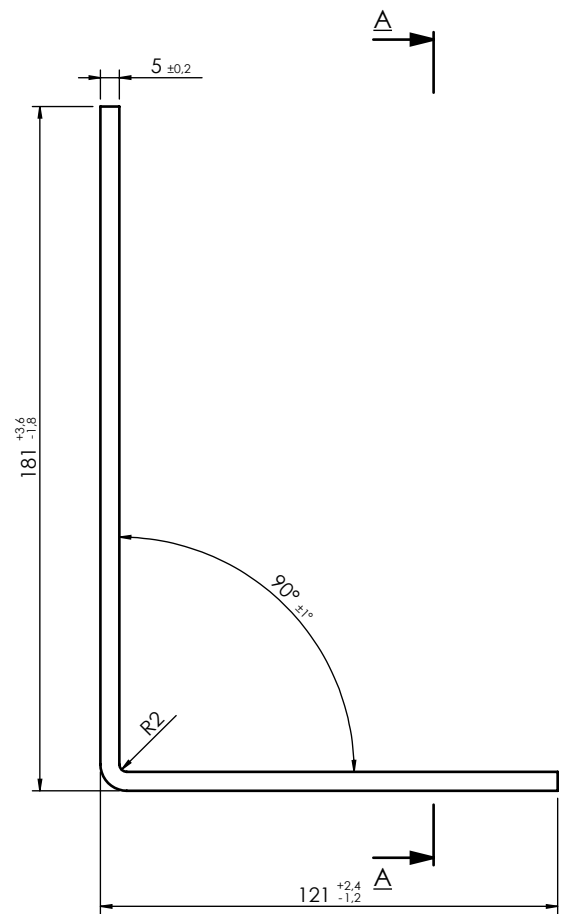


This document is the absolute property of DOMAX Sp. z o.o. This document must not be copied without the written permission of DOMAX Sp. z o.o. The contents thereof must not be disclosed to a third party nor be used for any unauthorized purpose. Contravention will be prosecuted.

| Revision | | | | |
|----------|-------------|------|------------|-------------|
| Rev. | Explanation | Date | Revised by | Approved by |
| | | | | |



- Note:**
 1. General tolerances EN 22768 mK.
 2. Corrosion protection Fe / Zn 12 (gold color)

| | | | | | |
|----------------------|-----------------|------------|-------------|----------|-------------|
| 1 | 1 | Plate | x5-293x40 | S235 | 0,448 |
| Pos. | No. | Name | Description | Material | Weight |
| Design | | Checked | Approved | Note | |
| Drawn D.Kozłowski | | Format A4 | Scale 1:2 | Material | Weight - |
| Index 4017 | Date 07.11.2019 | Angle KB 3 | | | Sheet 1 / 1 |
| DOMAX Sp. z o.o. | | KB 3 | | | Rev 0 |